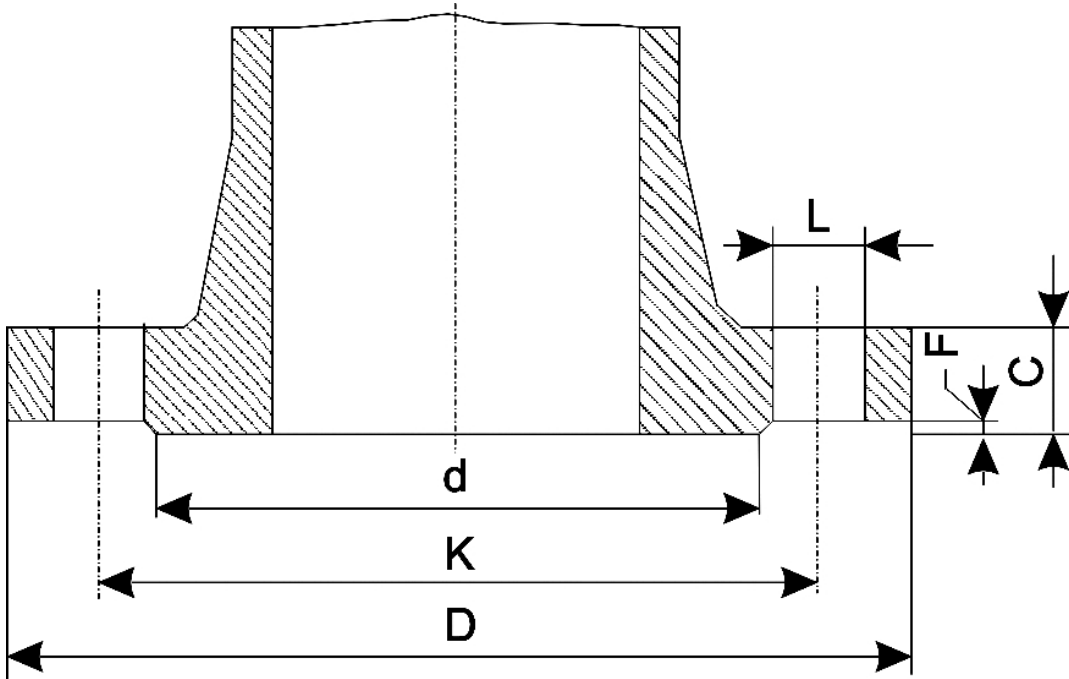


There are no translations available.

Dimensions of the Steel Flanges DN15-1/2"



n° - number of holes
 dia - diameter of bolts

Flange standard	PN	D	K	L	n°
Rating					

UNI 2223					
DIN 2501					
BS 4504					
NF E 29-203*					
ISO/DIS 7005-1.2*	2,5-6		80		55

10	95	65	14
----	----	----	----

16	95	65	14
----	----	----	----

25	95	65	14
----	----	----	----

40	95	65	14
----	----	----	----

64	105	75	14
----	-----	----	----

100	105	75	14
-----	-----	----	----

ISO/DIS 7005-1.2
NF E 29-203

20

90

60,5

50	95	66,5	16
----	----	------	----

100	95	66,5	16
-----	----	------	----

ANSI B 16.5
BS 1560

150	3,50
(88,9)	2,38
(60,5)	0,62
(15,8)	4
(12,7)	0,44
(11,2)	1,38
(35)	0,06
(1,5)	
300	3,75
(95,2)	2,62
(66,6)	0,62
(15,8)	4
(12,7)	0,56
(14,3)	1,38
(35)	0,06
(1,5)	
400	3,75
(95,2)	2,62
(66,6)	0,62
(15,8)	4
(12,7)	0,56
(14,3)	1,38
(35)	0,25**
(6,4)	
600	3,75

Dimensions of the steel Flanges DN15-1/2"

(95,2)	2,62	
(66,6)	0,62	
(15,8)	4	0,50
(12,7)	0,56	
(14,3)	1,38	
(35)	0,25**	
(6,4)		
900	4,75	
(120,6)	3,25	
(82,5)	0,88	
(22,3)	4	0,75
(19,0)	0,88	
(22,2)	1,38	
(35)	0,25**	
(6,4)		
BS 10		
AS 2129	A	3 ³ / ₄
(95,2)	2 ⁵ / ₈	
(66,7)	9/16	
(14,3)	4	1/2
(12,7)	3/16	
(4,8)	—	—
D	3 ³ / ₄	
(95,2)	2 ⁵ / ₈	
(66,7)	9/16	
(14,3)	4	1/2
(12,7)	3/8	
(9,5)	—	—
E	3 ³ / ₄	
(95,2)	2 ⁵ / ₈	
(66,7)	9/16	
(14,3)	4	1/2
(12,7)	3/8	
(9,5)	—	—
F	3 ³ / ₄	
(95,2)	2 ⁵ / ₈	
(66,7)	9/16	
(14,3)	4	1/2
(12,7)	3/8	
(9,5)	—	—
H	4 ¹ / ₂	
(114,3)	3 ¹ / ₄	
(82,5)	11/16	
(17,5)	4	5/8
(15,9)	1/2	

Dimensions of the steel Flanges DN15-1/2"

(12,7)	2 ¹ / ₄	
(57,2)	1/16	
(1,6)		
J	4 ¹ / ₂	
(114,3)	3 ¹ / ₄	
(82,5)	11/16	
(17,5)	4	5/8
(15,9)	5/8	
(15,9)	2 ¹ / ₄	
(57,2)	1/16	
(1,6)		

Note - The dimensions of ANSI - BS - AS flanges are in inch; the others are in mm (the ones in brackets included which are derived from the dimensions in inch)* For ratings 2,5 - 6 - 10- 16-25-40 only ** To be added to the thickness C of the flange