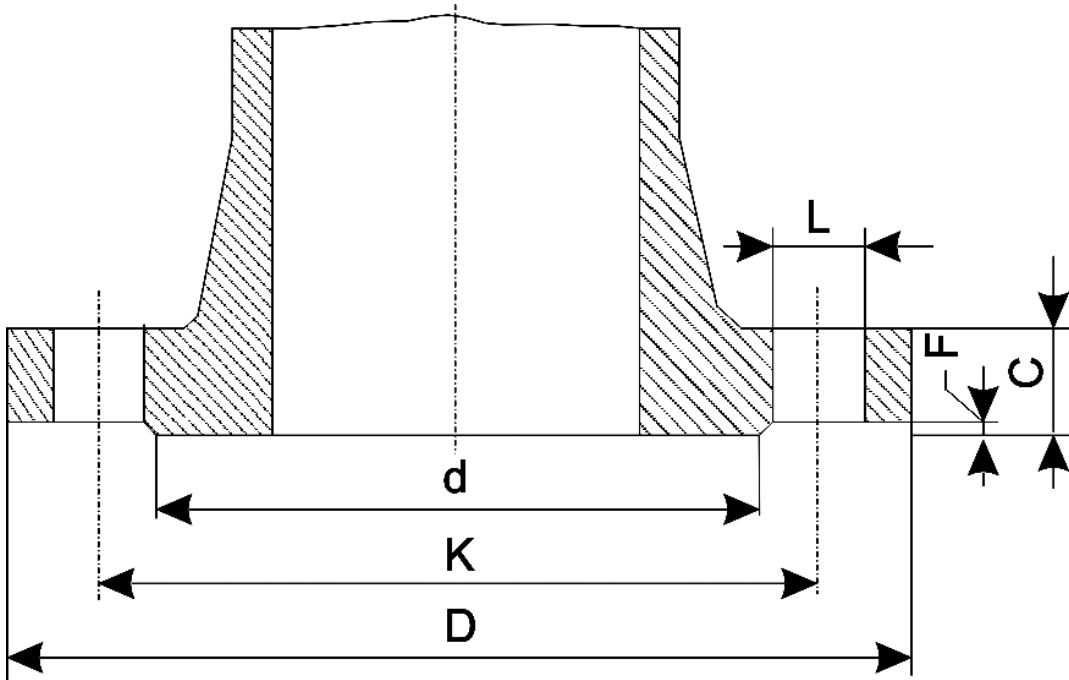


There are no translations available.

Dimensions of the steel Flanges DN 25 - 1"



n° - number of holes
 dia - diameter of bolts

Flange standard	PN	D	K	L
Rating				

UNI 2223				
DIN 2501				
BS 4504				
NF E 29-203*				
ISO/DIS 7005-1.2*	2,5-6		100	75

Dimensions of the steel Flanges DN25-1"

2				
50		125	89,0	18
2				
100		125	89,0	18
7**				
ANSI B 16.5				
BS 1560		150	4,25	
(107,9)		3,12		
(79,4)		0,62		
(15,8)		4	0,50	
(12,7)		0,56		
(14,3)		2,00		
(50,8)		0,06		
(1,6)				
300		4,88		
(123,8)		3,50		
(88,9)		0,75		
(19,0)		4	0,62	
(15,9)		0,69		
(17,5)		2,00		
(50,8)		0,06		
(1,6)				
400		4,88		
(123,8)		3,50		
(88,9)		0,75		
(19,0)		4	0,62	
(15,9)		0,69		
(17,5)		2,00		
(50,8)		0,25**		
(6,4)				
600		4,88		
(123,8)		3,50		
(88,9)		0,75		

Dimensions of the steel Flanges DN25-1"

(19,0)	4	0,62
(15,9)	0,69	
(17,5)	2,00	
(50,8)	0,25**	
(6,4)		
900	5,12	
(130,2)	4,00	
(101,6)	1,00	
(25,4)	4	0,88
(22,2)	1,12	
(28,6)	2,00	
(50,8)	0,25**	
(6,4)		
BS 10		
AS 2129	A	4½
(114,3)	¾	
(82,6)	9/16	
(14,3)	4	½
(12,7)	3/16	
(4,8)	—	—
D	4½	
(114,3)	¾	
(82,6)	9/16	
(14,3)	4	½
(12,7)	⅜	
(9,5)	—	—
E	4½	
(114,3)	¾	
(82,6)	9/16	
(14,3)	4	½
(12,7)	⅜	
(9,5)	—	—
F	4¾	
(120,6)	3 7/16	
(87,3)	11/16	
(17,5)	4	⅝
(15,9)	⅜	
(9,5)	—	—
H	4¾	
(120,6)	3 7/16	
(87,3)	11/16	
(17,5)	4	⅝
(15,9)	9/16	
(14,3)	2½	
(63,5)	1/16	
(1,6)		

Dimensions of the steel Flanges DN25-1"

	J	$4\frac{3}{4}$	
(120,6)		$3\frac{7}{16}$	
(87,3)		$1\frac{1}{16}$	
(17,5)		4	$\frac{5}{8}$
(15,9)		$\frac{3}{4}$	
(19,0)		$2\frac{1}{2}$	
(63,5)		$1\frac{1}{16}$	
(1.6)			

Note - The dimensions of ANSI - BS -AS flanges are in inch; the others are in mm (the ones in brackets included which are derived from the dimensions in inch)* For ratings 2,5-6-10-16-25-40 only** To be added to the thickness C of the flange