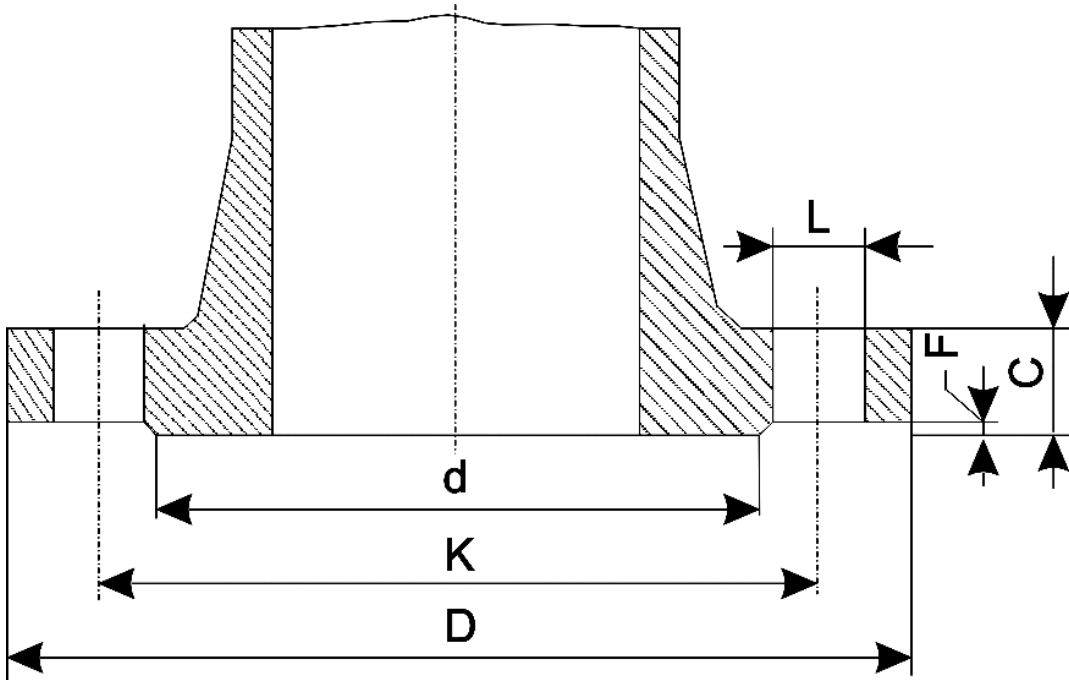


There are no translations available.

Dimensions of the steel Flanges DN 32 - 1¼"



n° - number of holes
dia - diameter of bolts

Flange standard	PN	D	K	L
Rating				

UNI 2223				
DIN 2501				
BS 4504				
NF E 29-203*				
ISO/DIS 7005-1.2*	2,5-6		120	90

Dimensions of the steel Flanges DN32-1¼"

10	140	100	18
----	-----	-----	----

16	140	100	18
----	-----	-----	----

25	140	100	18
----	-----	-----	----

40	140	100	18
----	-----	-----	----

64	155	110	22
----	-----	-----	----

2			
100	155	110	22

2			
ISO/DIS 7005-1.2			
NF E 29-203	20	120	89,0

50	135	98,5	
18	4	M16	19,5
100	135	98,5	18

ANSI B 16.5
BS 1560

(115,5)	150	4,62
(88,9)	3,50	
(15,8)	0,62	
(12,7)	4	0,50
(15,9)	0,62	
(63,5)	2,50	
(1,6)	0,06	
300	5,25	
(133,3)	3,88	
(98,4)		
0,75		
(19,0)	4	0,62
(15,9)	0,75	
(19,0)	2,50	
(63,5)	0,06	
(1,6)		
400	5,25	
(133,3)	3,88	
(98,4)	0,75	
(19,0)	4	0,62
(15,9)	0,81	
(20,6)	2,50	
(63,5)	0,25**	
(6,4)		
600	5,25	

Dimensions of the steel Flanges DN32-1¼"

(133,3)	3,88		
(98,4)	0,75		
(19,0)	4		0,62
(15,9)	0,81		
(20,6)	2,50		
(63,5)	0,25**		
(6,4)			
900	6,25		
(158,7)	4,38		
(111,1)	1,00		
(25,4)	4		0,88
(22,2)	1,12		
(28,6)	2,50		
(63,5)	0,25**		
(6,4)			
BS 10			
AS 2129	A		4¾
(120,7)	3 7/16		
(87,3)	9/16		
(14,3)	4		½
(12,7)	¼		
(6,4)	—		—
D	4¾		
(120,7)	3 7/16		
(87,3)	9/16		
(14,3)	4		½
(12,7)	½		
(12,7)	—		—
E	4¾		
(120,7)	3 7/16		
(87,3)	9/16		
(14,3)	4		½
(12,7)	½		
(12,7)	—		—
F	5¼		
(133,3)			
3⅞			
(98,4)	11/16		
(17,5)	4		⅝
(15,9)	½		
(12,7)	—		—
H	5¼		
(133,3)	3⅞		
(98,4)	11/16		
(17,5)	4		⅝
(15,9)	11/16		

Dimensions of the steel Flanges DN32-1¼"

(17,5)		3 1/16	
(76,2)		1/16	
(1.6)			
	J		5¼
(133,3)		37/8	
(98,4)		11/16	
(17,5)		4	5/8
(15,9)		¾	
(19,0)		3 1/16	
(76,2)		1/16	
(1.6)			

Note - The dimensions of ANSI - BS -AS flanges are in inch; the others are in mm (the ones in brackets included which are derived from the dimensions in inch)* For ratings 2,5-6-10-16-25-40 only** To be added to the thickness C of the flange