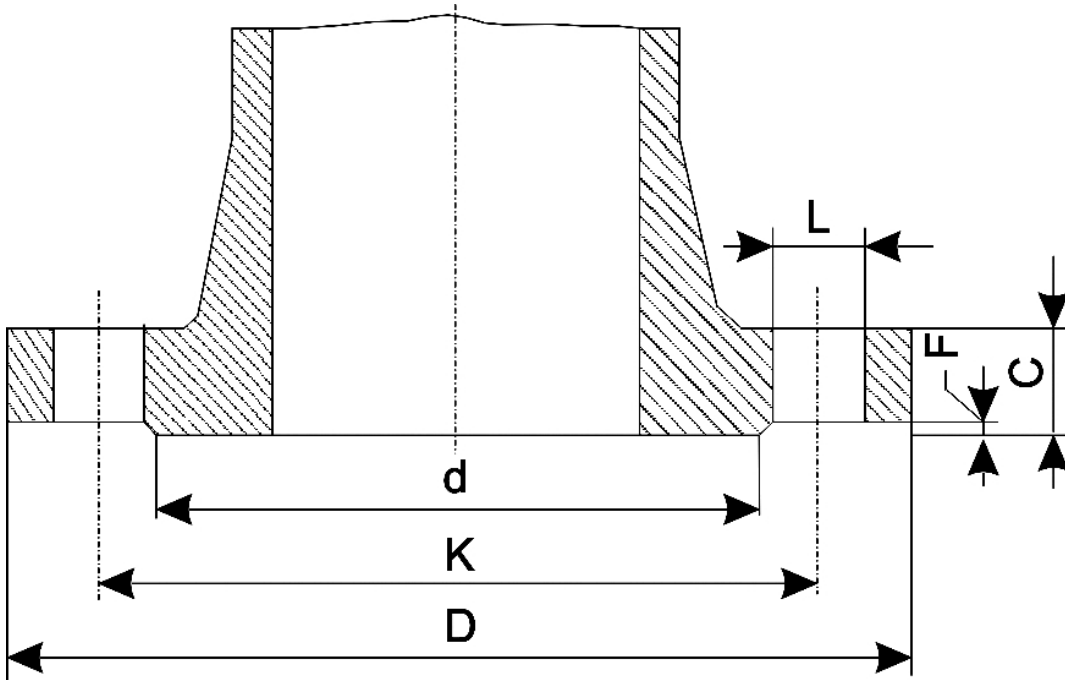


There are no translations available.

Dimensions of the steel Flanges DN 200 - 8"



n° - number of holes
 dia - diameter of bolts

Flange standard	PN			
Rating	D	K	L	n°

UNI 2223				
DIN 2501				
BS 4504				
NF E 29-203*				
ISO/DIS 7005-1.2*	2,5-6	320	280	

Dimensions of the steel Flanges DN200-8"

10	340	295	22
16	340	295	22
25	360	310	26
40	375	320	30
64	415	345	36
3 100	430	360	36

3			
ISO/DIS 7005-1.2			
NF E 29-203	20	345	298,5
50	380	330,0	
26,0	12	M24	41,5
100	420	349,0	32,5
ANSI B 16.5			
BS 1560	150	13,50	
(342,9)	11,75		
(298,4)	0,88		
(22,2)	8	0,75	
(19,0)	1,12		
(28,6)	8,50		
(215,9)	0,06		
(1,6)			
300	15.00		
(381,0)	13,00		
(330,2)			
1,00			
(25,4)	12	0,88	
(22,2)	1,62		
(41,3)	8,50		
(215,9)	0,06		
(1,6)			
400	15.00		
(381,0)	13,00		
(330,2)	1,12		
(28,6)	12	1,00	
(25,4)	1,88		
(47,6)	8,50		

Dimensions of the steel Flanges DN200-8"

(215,9)	0,25**	
(6,4)		
600	16,50	
(419,1)	13,75	
(349,2)	1,25	
(31,8)	12	1,12
(28,6)	2,19	
(55,6)	8,50	
(215,9)	0,25**	
(6,4)		
900	18,50	
(469,9)	15,50	
(393,7)	1,50	
(38,1)	12	1,38
(34,9)	2,50	
(63,5)	8,50	
(215,9)	0,25**	
(6,4)		
BS 10		
AS 2129	A	13¼
(336,6)	11½	
(292,1)	11/16	
(17,5)	8	5/8
(15,9)	½	
(12,7)	—	—
D	13¼	
(336,6)	11½	
(292,1)	11/16	
(17,5)	8	5/8
(15,9)	½	
(12,7)	—	—
E	13¼	
(336,6)	11½	
(292,1)	7/8	
(22,2)	8	¾
(19,0)	¾	
(19,0)	—	—
F	14½	
(368,3)		
12¾		
(323,9)	7/8	
(22,2)	12	¾
(19,0)	1	
(25,4)	—	—
H	14½	
(368,3)	12¾	

Dimensions of the steel Flanges DN200-8"

(323,9)	$\frac{7}{8}$	
(22,2)	12	$\frac{3}{4}$
(19,0)	$1\frac{1}{4}$	
(31,8)	$10\frac{1}{4}$	
(260,4)	$1/16$	
(1.6)		
J	$14\frac{1}{2}$	
(368,3)	$12\frac{3}{4}$	
(323,9)	1	
(25,4)		
12	$\frac{7}{8}$	
(22,2)	$1\frac{5}{8}$	
(41,3)	$10\frac{1}{4}$	
(260,4)	$1/16$	
(1.6)		

Note - The dimensions of ANSI - BS -AS flanges are in inch; the others are in mm (the ones in brackets included which are derived from the dimensions in inch)* For ratings 2,5-6-10-16-25-40 only** To be added to the thickness C of the flange