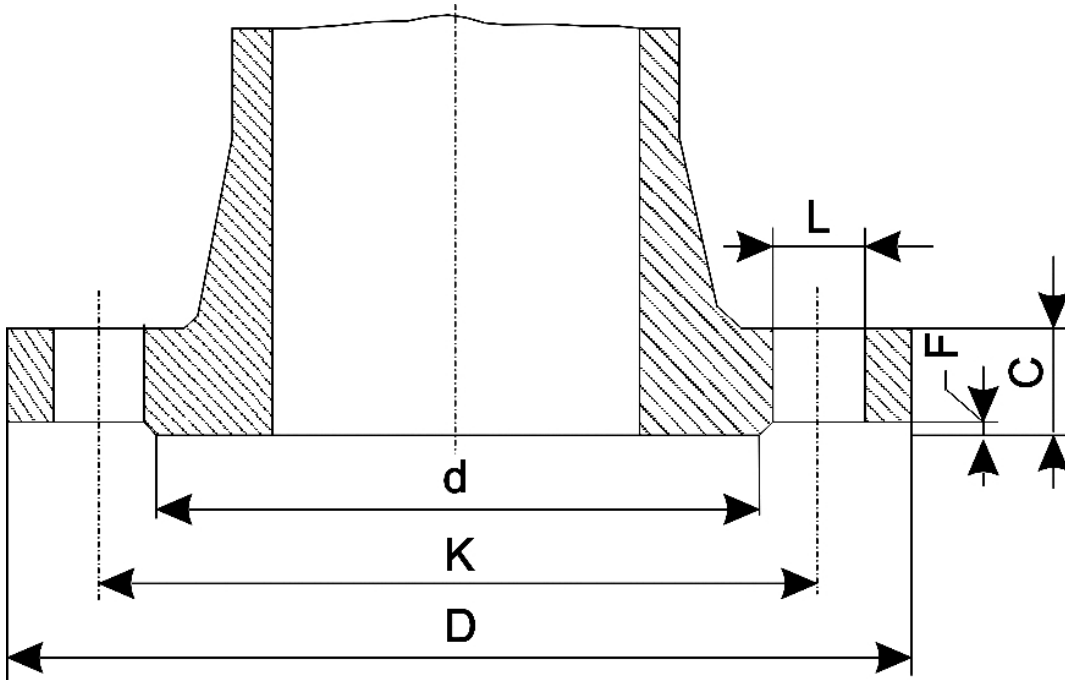


There are no translations available.

Dimensions of the steel Flanges DN 80 - 3"



n° - number of holes
 dia - diameter of bolts

Flange standard	PN	D	K	L	n°
Rating					

UNI 2223					
DIN 2501					
BS 4504					
NF E 29-203*					
ISO/DIS 7005-1.2*	2,5-6		190		150

Dimensions of the steel Flanges DN80-3"

10	200	160	18
16	200	160	18
25	200	160	18
40	200	160	18
64	215	170	22
3 100	265	210	26

3			
ISO/DIS 7005-1.2			
NF E 29-203	20	190	152,5
50	210	168,5	
22	8	M20	29
100	210	168,5	22
ANSI B 16.5			
BS 1560	150	7,50	
(190,5)	6,00		
(152,4)	0,75		
(19,0)	4	0,62	
(15,9)	0,94		
(23,8)	5,00		
(127,0)	0,06		
(1,6)			
300	8,25		
(209,5)	6,62		
(168,3)			
0,88			
(22,2)	8	0,75	
(19,0)	1,12		
(28,6)	5,00		
(127,0)	0,06		
(1,6)			
400	8,25		
(209,5)	6,62		
(168,3)	0,88		
(22,2)	8	0,75	
(19,0)	1,25		
(31,7)	5,00		

Dimensions of the steel Flanges DN80-3"

(127,0)	0,25**	
(6,4)		
600	8,25	
(209,5)	6,62	
(168,3)	0,88	
(22,2)	8	0,75
(19,0)	1,25	
(31,7)	5,00	
(127,0)	0,25**	
(6,4)		
900	9,50	
(241,3)	7,50	
(190,5)	1,00	
(25,4)	8	0,88
(22,2)	1,50	
(38,1)	5,00	
(127,0)	0,25**	
(6,4)		
BS 10		
AS 2129	A	7¼
(184,1)	5¾	
(146,0)	11/16	
(17,5)	4	5/8
(15,9)	3/8	
(9,5)	—	—
D	7¼	
(184,1)	5¾	
(146,0)	11/16	
(17,5)	4	5/8
(15,9)	9/16	
(14,3)	—	—
E	7¼	
(184,1)	5¾	
(146,0)	11/16	
(17,5)	4	5/8
(15,9)	9/16	
(14,3)	—	—
F	8	
(203,2)		
6½		
(165,1)	11/16	
(17,5)	8	5/8
(15,9)	5/8	
(15,9)	—	—
H	8	
(203,2)	6½	

Dimensions of the steel Flanges DN80-3"

(165,1)	11/16	
(17,5)	8	5/8
(15,9)	7/8	
(22,2)	5,00	
(127,0)	1/16	
(1.6)		
J	8	
(203,2)	6½	
(165,1)	7/8	
(22,2)	8	¾
(19,0)	1¼	
(31,8)	5,00	
(127,0)	1/16	
(1.6)		

Note - The dimensions of ANSI - BS -AS flanges are in inch; the others are in mm (the ones in brackets included which are derived from the dimensions in inch)* For ratings 2,5-6-10-16-25-40 only** To be added to the thickness C of the flange