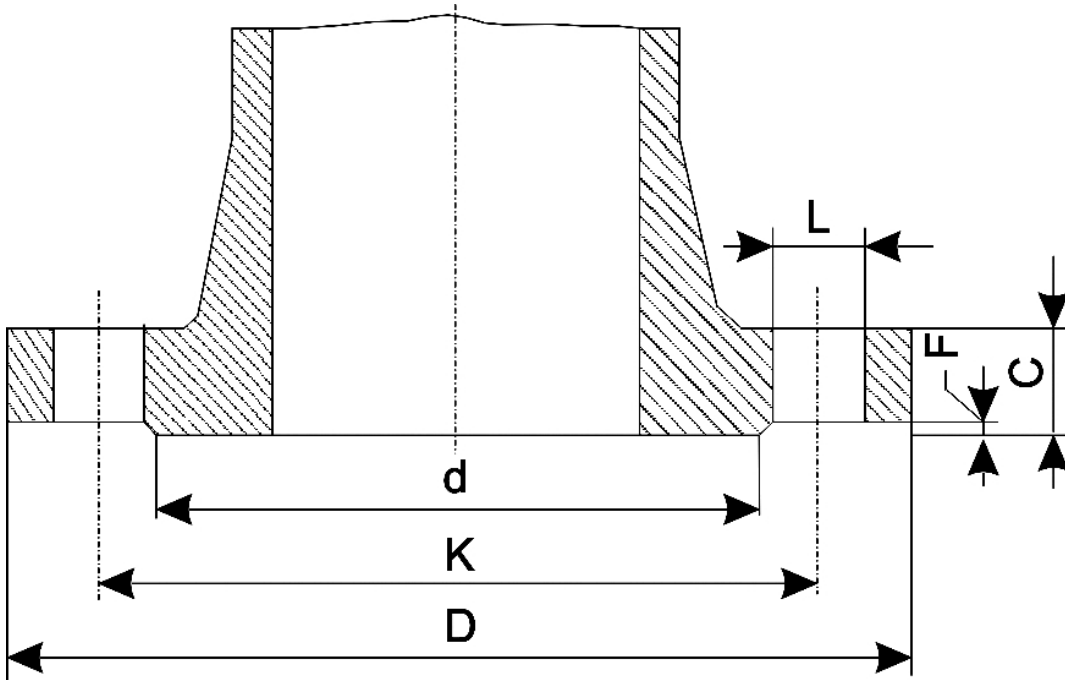


There are no translations available.

**Dimensions of the steel Flanges DN 450 - 18"**



n° - number of holes  
 dia - diameter of bolts

Flange standard	PN	D	K	L	n°
Rating					

UNI 2223					
DIN 2501					
BS 4504					
NF E 29-203*					
ISO/DIS 7005-1.2*	2,5-6		595		550

## Dimensions of the steel Flanges DN450-18"

---

10	615	565	26
----	-----	-----	----

16	640	585	30
----	-----	-----	----

25	670	600	36
----	-----	-----	----

40	685	610	39
----	-----	-----	----

64	715	630	42
----	-----	-----	----

4			
100	770	675	48

4			
---	--	--	--

ISO/DIS 7005-1.2  
NF E 29-203

20			
----	--	--	--

	635		
--	-----	--	--

		578,0	
--	--	-------	--

## Dimensions of the steel Flanges DN450-18"

---

50 35,5	710 24	628,5 M33	60,5
100	745	654,0	45,0

### ANSI B 16.5 BS 1560

(635,0)	150 22,75	25,00	
(577,8)	1,25		
(31,7)	16	1,12	
(28,6)	1,56		
(39,7)	21,00		
(533,4)	0,06		
(1,6)			
300	28,00		
(711,2)	24,75		
(628,6)			
1,38			
(34,9)	24	1,25	
(31,8)	2,38		
(60,3)	21,00		
(533,4)	0,06		
(1,6)			
400	28,00		
(711,2)	24,75		
(628,6)	1,50		
(38,1)	24	1,38	
(34,9)	2,62		
(66,7)			
21,00			
(533,4)	0,25**		
(6,4)			

## Dimensions of the steel Flanges DN450-18"

600	29,25	
(742,9)	25,75	
(654,0)	1,75	
(44,4)		
20	1,62	
(41,3)	3,25	
(82,5)	21,00	
(533,4)	0,25**	
(6,4)		
900	31,00	
(787,4)	27,00	
(586,8)	2,00	
(50,8)	20	1,88
(47,6)		
4,00		
(101,6)		
21,00		
(533,4)	0,25**	
(6,4)		
BS 10		
AS 2129	A	25 <sup>1</sup> / <sub>4</sub>
(641,4)	23	
(584,2)	1	
(25,4)	12	7 <sup>7</sup> / <sub>8</sub>
(22,2)	7 <sup>7</sup> / <sub>8</sub>	
(22,2)	—	—
D	25 <sup>1</sup> / <sub>4</sub>	
(641,4)	23	
(584,2)	1	
(25,4)	12	7 <sup>7</sup> / <sub>8</sub>
(22,2)	1 <sup>1</sup> / <sub>8</sub>	
(28,6)	—	—
E	25 <sup>1</sup> / <sub>4</sub>	
(641,4)	23	
(584,2)	1	
(25,4)	16	7 <sup>7</sup> / <sub>8</sub>
(22,2)	1 <sup>1</sup> / <sub>8</sub>	
(28,6)	—	—
F	26 <sup>1</sup> / <sub>2</sub>	
(673,1)		
24		
(609,6)	1 <sup>1</sup> / <sub>4</sub>	
(31,8)	20	1 <sup>1</sup> / <sub>8</sub>
(28,6)	1 <sup>3</sup> / <sub>8</sub>	
(34,9)	—	—
H	26 <sup>1</sup> / <sub>2</sub>	

## Dimensions of the steel Flanges DN450-18"

---

(673,1)	24	
(609,6)	1¼	
(31,8)	20	1½
(28,6)	1⅞	
(47,6)	21	
(533,4)	1/16	
(1.6)		
J	26½	
(673,1)	24	
(609,6)	1¾	
(34,9)	20	1¼
(31,8)	2¾	
(60,3)		
21		
(533,4)	1/16	
(1.6)		

Note - The dimensions of ANSI - BS -AS flanges are in inch; the others are in mm (the ones in brackets included which are derived from the dimensions in inch)\* For ratings 2,5-6-10-16-25-40 only\*\* To be added to the thickness C of the flange